



1205 RF Probe 20dB



The 1205 RF Probe 20 dB is a passive 10:1 RF voltage probe with a 50 VDC block built in. It has been designed to allow users of RF test equipment to use standard signal tracing techniques. The probe makes it possible to conveniently and accurately monitor or inject signals up to 4 GHz into RF circuits without significantly loading or detuning them.

The probe comes with interchangeable ground clips that adapt to a wide range of applications.

Highlights

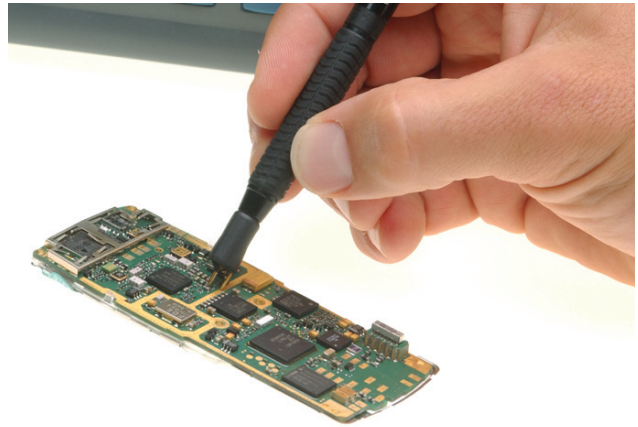
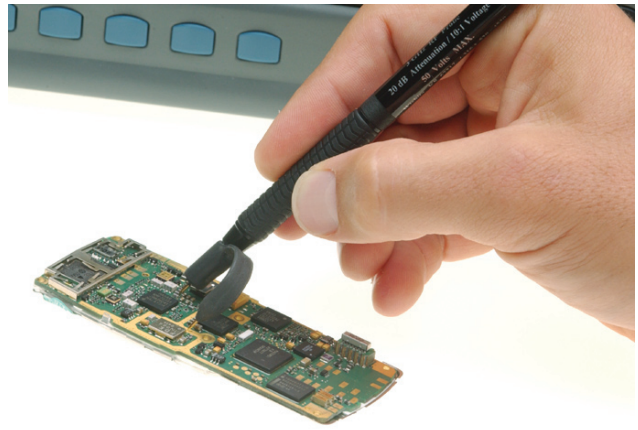
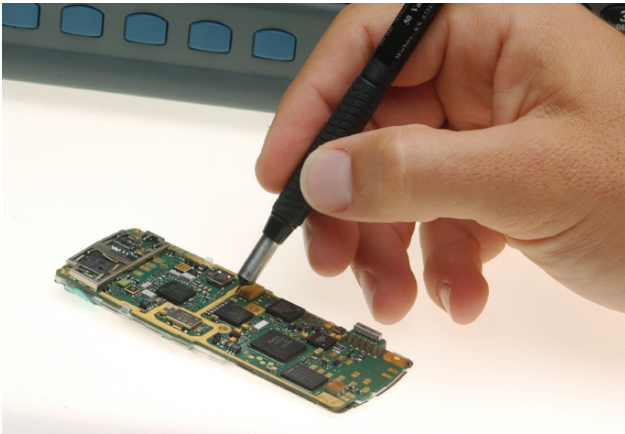
- Bandwidth: 100 kHz to 4 GHz
- Low Distortion, Passive RF Design
- Light RF Loading Characteristics
- Internal 50 VDC Block
- 10:1 Voltage Ratio
- Rugged Design

Specifications

Frequency range	
Specified	100 kHz to 3 GHz
Usable	100 kHz to 4 GHz
Frequency response	±3dB
Voltage attenuation for 50 W sources	10:1 (Nominal)
RF attenuation for 50 W circuitries	20 dB (Nominal)
RF loading effects	500 W ±10% < 1 pF at 1 MHz
RF voltage range	7 V RMS (continuous) 35 V RMS (max. 1 sec.)
DC voltage block	50 V maximum
Cable length	1 meter
Connector	BNC (male)

Ordering information

1205 RF Probe 20 dB M 248 640
including adapter N (male), BNC (female)



Wireless Telecom Group Sales Offices

Willtek Communications GmbH
Ismaning
Germany
Tel: +49 (0)89 996 41 0
Fax: +49 (0)89 996 41 440
info@willtek.com
www.willtek.com

Parsippany, NJ
USA
Tel: +1 973 386 9696
Fax: +1 973 386 9191

Cheadle Hulme, Cheshire
United Kingdom
Tel: +44 (0)161 486 3353
Fax: +44 (0)161 486 3354

Roissy
France
Tel: +33 (0)1 72 02 30 30
Fax: +33 (0)1 49 38 01 06

Singapore
Tel: +65 6827 9670
Fax: +65 6827 9601

Shanghai
China
Tel: +86 21 5835 8039
Fax: +86 21 5835 5238

© Copyright 2009 Willtek Commu-
nications GmbH. All rights reserved.
1205/DS324/1002a/EN

Note: Specifications, terms and conditions
are subject to change without prior notice.